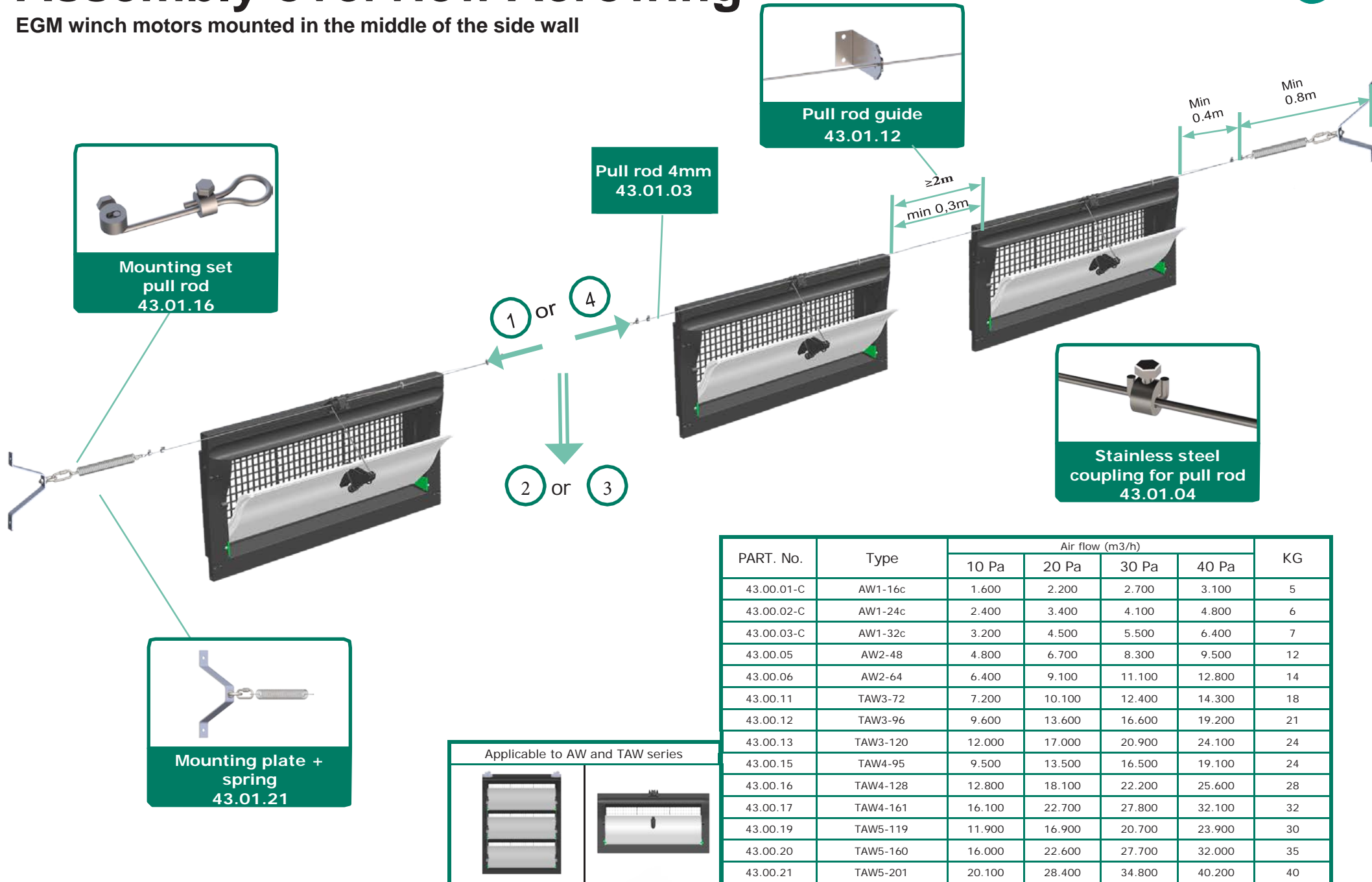
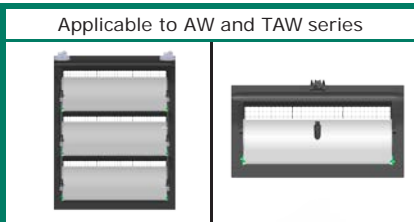


Assembly overview Aerowing

EGM winch motors mounted in the middle of the side wall

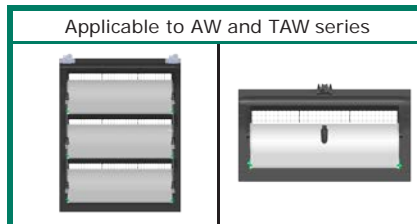
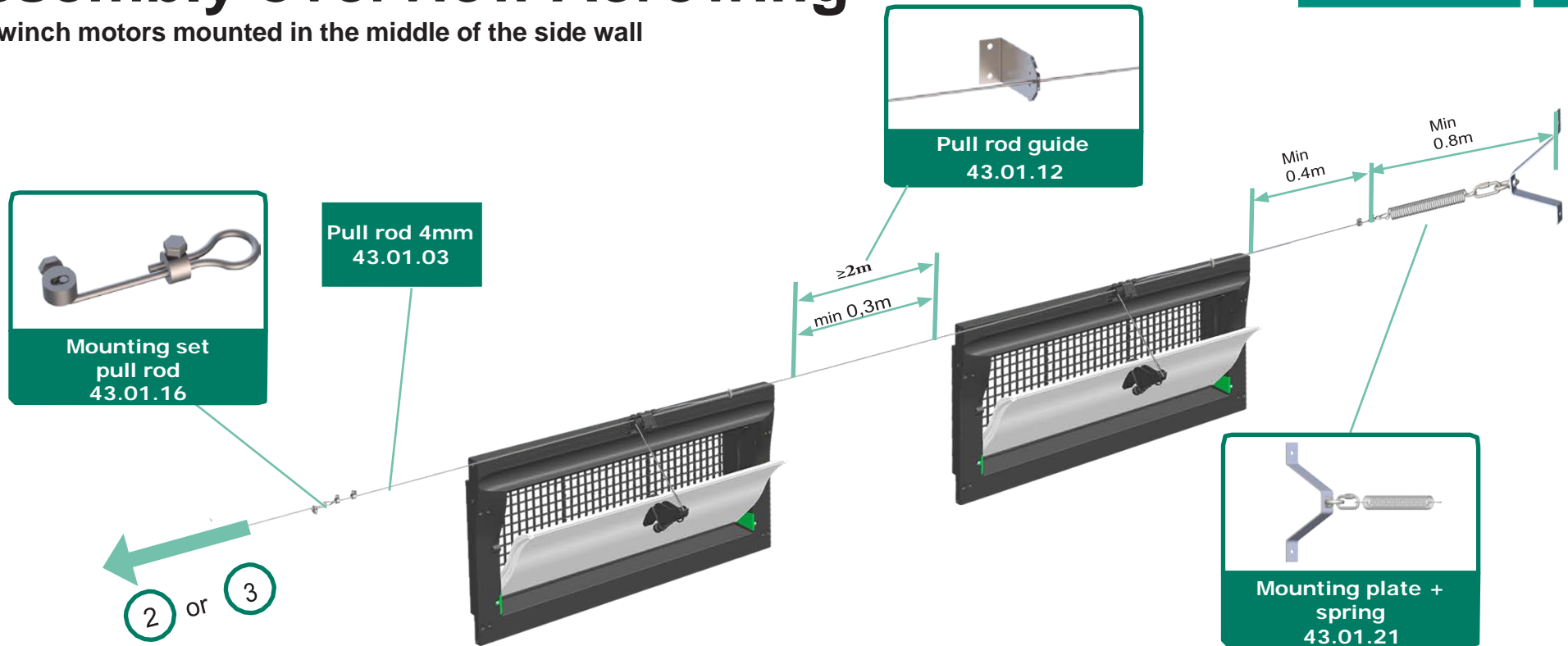


PART. No.	Type	Air flow (m3/h)				KG
		10 Pa	20 Pa	30 Pa	40 Pa	
43.00.01-C	AW1-16c	1.600	2.200	2.700	3.100	5
43.00.02-C	AW1-24c	2.400	3.400	4.100	4.800	6
43.00.03-C	AW1-32c	3.200	4.500	5.500	6.400	7
43.00.05	AW2-48	4.800	6.700	8.300	9.500	12
43.00.06	AW2-64	6.400	9.100	11.100	12.800	14
43.00.11	TAW3-72	7.200	10.100	12.400	14.300	18
43.00.12	TAW3-96	9.600	13.600	16.600	19.200	21
43.00.13	TAW3-120	12.000	17.000	20.900	24.100	24
43.00.15	TAW4-95	9.500	13.500	16.500	19.100	24
43.00.16	TAW4-128	12.800	18.100	22.200	25.600	28
43.00.17	TAW4-161	16.100	22.700	27.800	32.100	32
43.00.19	TAW5-119	11.900	16.900	20.700	23.900	30
43.00.20	TAW5-160	16.000	22.600	27.700	32.000	35
43.00.21	TAW5-201	20.100	28.400	34.800	40.200	40

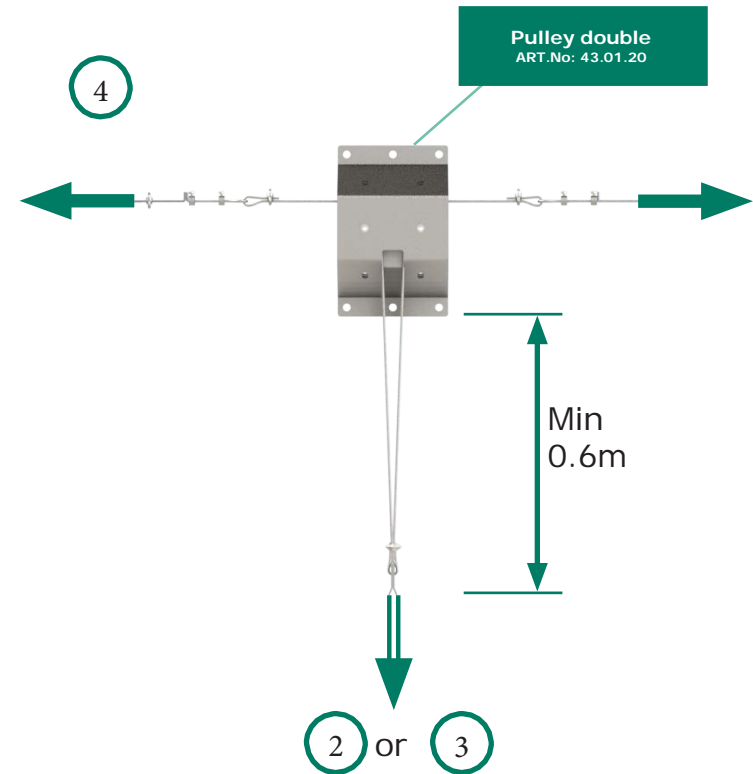
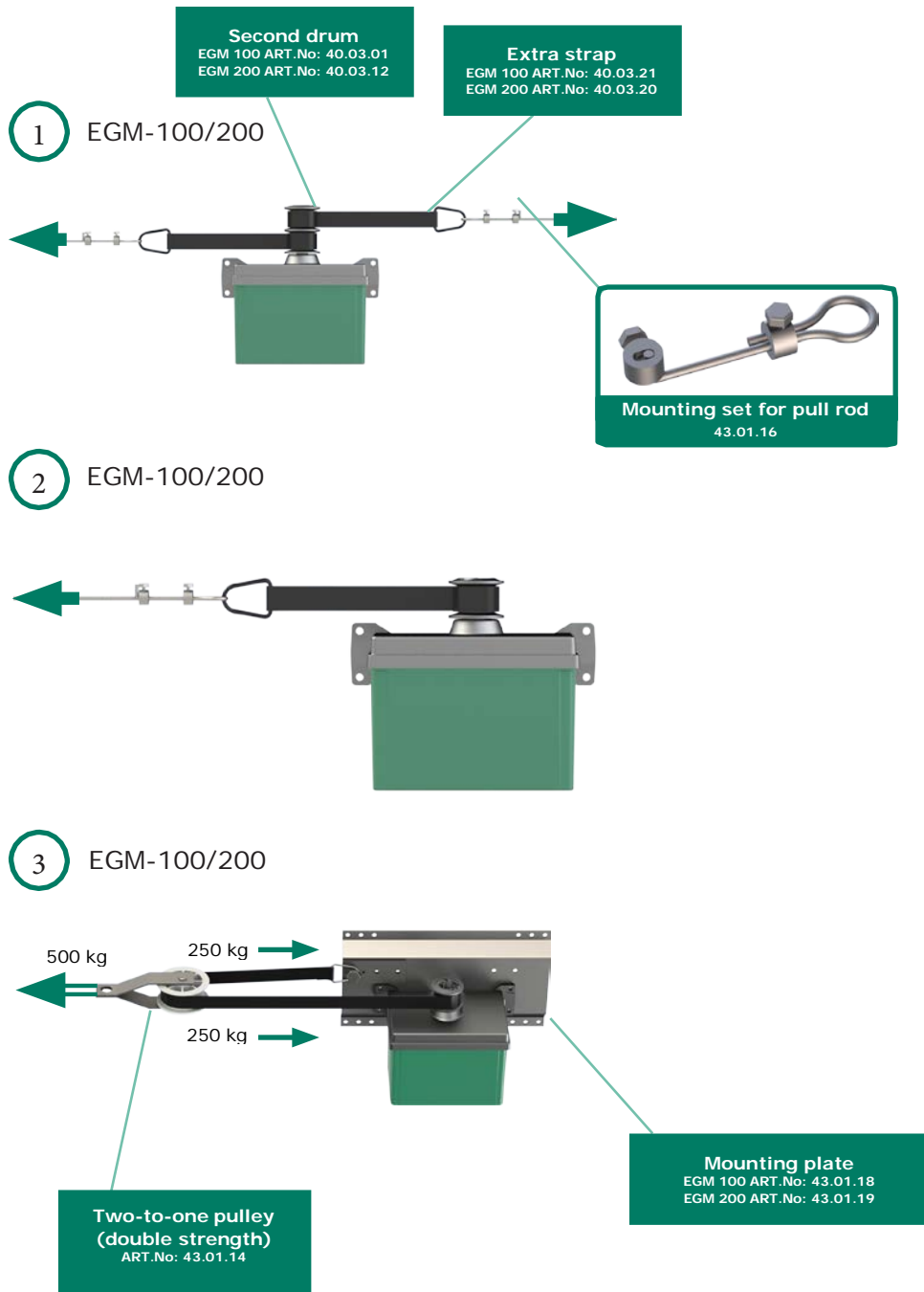


Assembly overview Aerowing

EGM winch motors mounted in the middle of the side wall



ART.No.	Type	Air flow (m3/h)				KG
		10 Pa	20 Pa	30 Pa	40 Pa	
43.00.01-C	AW1-16c	1.600	2.200	2.700	3.100	5
43.00.02-C	AW1-24c	2.400	3.400	4.100	4.800	6
43.00.03-C	AW1-32c	3.200	4.500	5.500	6.400	7
43.00.05	AW2-48	4.800	6.700	8.300	9.500	12
43.00.06	AW2-64	6.400	9.100	11.100	12.800	14
43.00.11	TAW3-72	7.200	10.100	12.400	14.300	18
43.00.12	TAW3-96	9.600	13.600	16.600	19.200	21
43.00.13	TAW3-120	12.000	17.000	20.900	24.100	24
43.00.15	TAW4-95	9.500	13.500	16.500	19.100	24
43.00.16	TAW4-128	12.800	18.100	22.200	25.600	28
43.00.17	TAW4-161	16.100	22.700	27.800	32.100	32
43.00.19	TAW5-119	11.900	16.900	20.700	23.900	30
43.00.20	TAW5-160	16.000	22.600	27.700	32.000	35
43.00.21	TAW5-201	20.100	28.400	34.800	40.200	40



Type	Max. strength	Winding range
EGM-100	100 kg	min. 13 cm max. 68 cm
EGM-200	250 kg	min. 16 cm max. 80 cm